



**Renew the Blue**

# Impaired Waters Listings

---

## 5 Lakes

Mendota  
Monona  
Wingra  
Waubesa  
Kegonsa

## 9 Rivers/Streams

Yahara  
Token  
Sixmile  
Dorn  
Pheasant Branch  
Wingra  
Starkweather  
Swan  
Door

## 11 Beaches

Spring Harbor  
Tenney  
Mendota County  
Esther  
Hudson  
Olbrich  
Brittingham  
Bernie's  
Goodland  
Vilas  
Olin



# Shared Interests

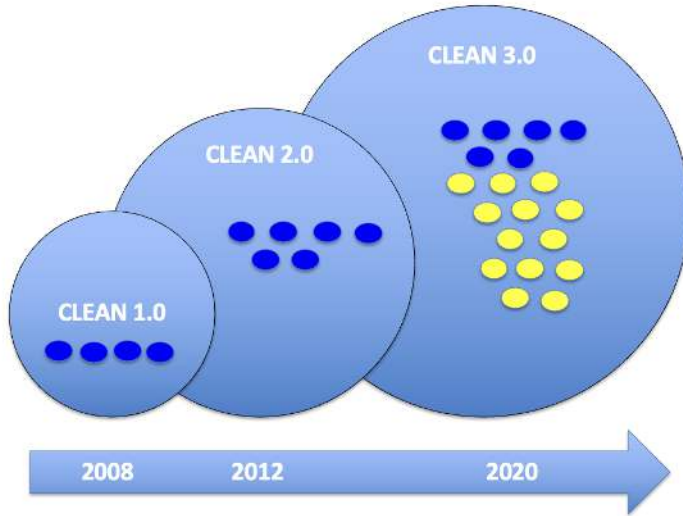
---



- Better water clarity
- Open beaches
- Fewer cyanobacteria blooms

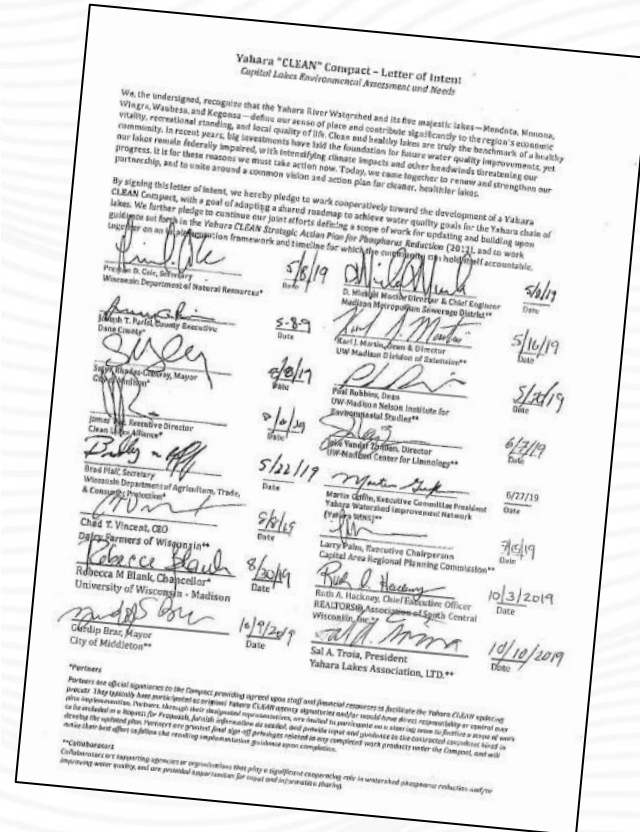
# Partnership Evolution

## Yahara CLEAN Compact

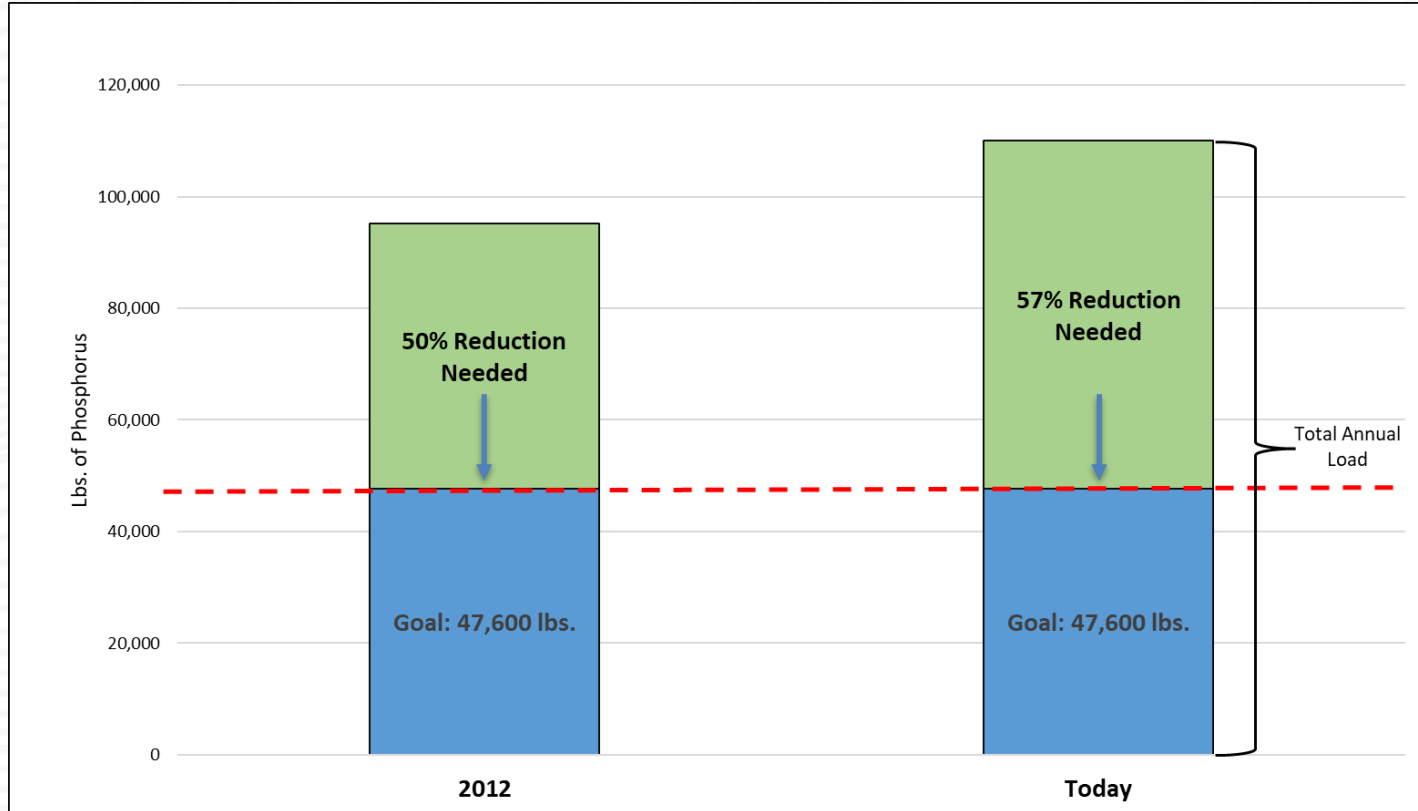


- Wisconsin DNR (P)
- Wisconsin DATCP (P)
- Dane County (P)
- City of Madison (P)
- Clean Lakes Alliance (P)
- UW-Madison (P)
- Madison Metropolitan Sewerage District
- Yahara WINS
- Capital Area Regional Plan. Commission
- Realtors Association of SC Wisconsin
- Dairy Farmers of Wisconsin
- UW Center for Limnology
- UW Nelson Institute
- UW Division of Extension
- City of Middleton
- Yahara Lakes Association
- Builders Association
- Dane County Towns Association
- Dane County Cities & Villages Association

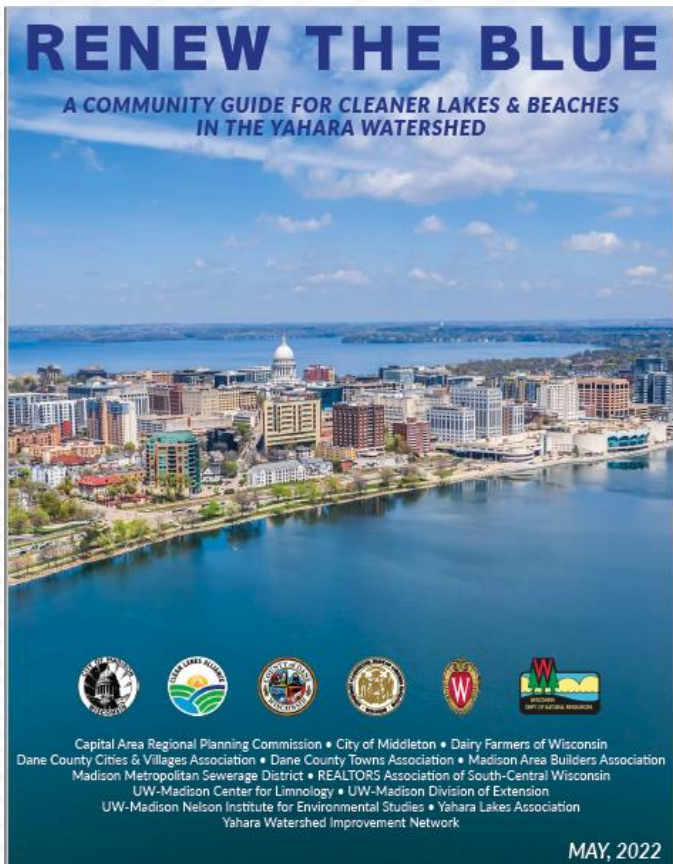
P = Full Partner



# Information is Power



# Stakeholder Roadmap



- ✓ Latest science
- ✓ Clear goals & targets
- ✓ Everyone has a role



**Government**



**Agriculture**



**Residential/  
Commercial**



**Builders/  
Developers**



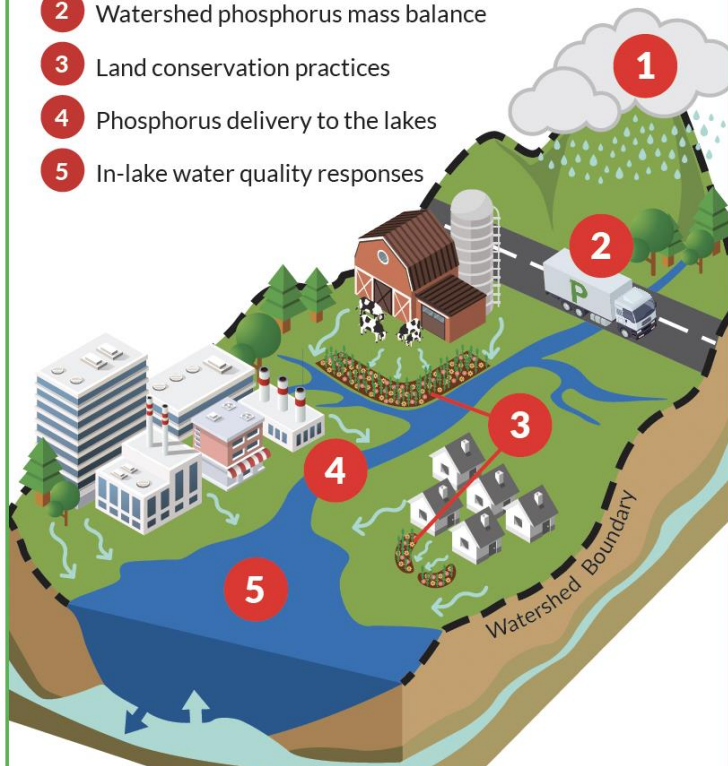
**Parks & Open  
Space Managers**



# Progress Accountability: HEALTH

## AREAS OF ANALYSIS

- 1 Weather and climate drivers
- 2 Watershed phosphorus mass balance
- 3 Land conservation practices
- 4 Phosphorus delivery to the lakes
- 5 In-lake water quality responses



Poor	Fair	Good	Excellent
	✓		
	✓		

# Progress Accountability: ACTION

---

## RENEW THE BLUE TOP DIRECT-IMPACT ACTIONS

1. Build additional manure-processing capacity.
2. Increase the ability to handle and transport manure.
3. Increase farmland acres guided by a nutrient management plan.
4. Increase farmland acres under no-till (or reduced tillage) and continuous living cover.
5. Increase municipal street-cleaning miles and frequency during leaf fall.
6. Protect internally drained lands and wetlands.
7. Increase green-infrastructure installations in parks, new developments, and on existing residential and commercial properties.



## **Renew the Blue Top Indirect-Impact Actions**

- 1. Continue to work together as Yahara CLEAN Compact members**
2. Increase participation in producer-led watershed groups
3. Complete an inventory of shoreline & beach conditions
4. Increase E. coli testing at public beaches
5. Continue to track and report progress

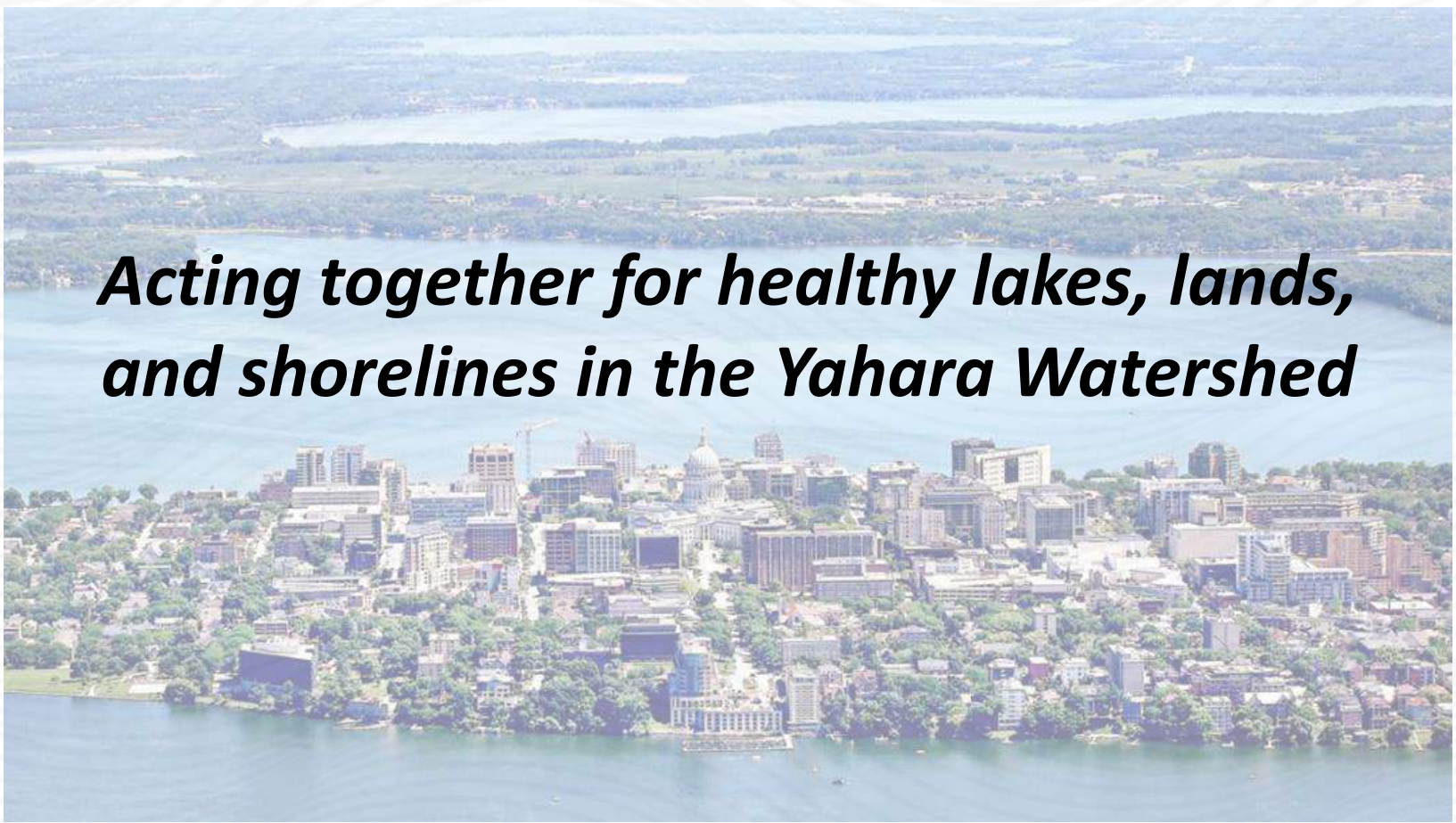
## **1. Continue to work together as Yahara CLEAN Compact members**

*“Maintain ongoing member meetings to collaborate on recommended actions, report progress, and coordinate around new initiatives. Ongoing collaboration should consider how actions might affect the watershed phosphorus mass balance, among other factors.”*

# Renew the Blue Council

---

***Acting together for healthy lakes, lands,  
and shorelines in the Yahara Watershed***





# Renew the Blue Council

---

## **In the water:**

Improved clarity and fewer cyanobacteria blooms

## **On the land:**

Decreased runoff

## **Along the shoreline:**

More open beaches and swimmable days

## **In the community:**

All stakeholders connected to, proud of,  
and responsible for our lands and waters

# Initial Objectives

---

## Land Health Assessment

- 5 public-facing progress metrics
- Inventory shoreline conditions
- Inventory undeveloped/protected lands
- Inventory green infrastructure

# Collective Impact Framework

---

Successfully address the complex social issue of watershed health through mutually reinforcing actions across all sectors that are focused and amplified by:

- a common agenda
- shared measurement systems
- continuous communication
- backbone support organization



# 2026 Council Chairs

---



**Shelly Allness**

Regional Secretary's Director

Wisconsin Department of Natural Resources



**Jason Valerius**

Executive Director

Capital Area Regional Planning Commission

# Growing Membership

---

Capital Area Regional Planning Commission  
City of Madison  
City of Middleton  
City of Monona  
Dane County  
Dane County Cities & Villages Association  
Friends of Lake Kegonsa Society  
Friends of Pheasant Branch Conservancy  
Ho-Chunk Nation  
Madison Area Builders Association

Madison LakeWay Partners  
Madison Metropolitan Sewerage District  
REALTORS Association of SC Wisconsin  
Village of Shorewood Hills  
WI Depart. of Ag, Trade & Consumer Protect.  
WI Department of Natural Resources  
Yahara Lakes Association  
Yahara Pride Farms  
Yahara WINS

# Council Delegate Kickoff

---

**Imagine a Day without Water:**

*Dane County & Clean Lakes Alliance Press Event*

---

Lussier Family Heritage Center

Thursday, October 16th

8:30-10:00 a.m.





# Questions?

**Paul Dearlove**  
**[Paul@cleanlakesalliance.org](mailto:Paul@cleanlakesalliance.org)**